



# Daily Technical Trader - Qatar

July 01, 2026



### QE Index Summary

	30 June 2026	29 June 2026	Chg
Index	10,242	10,252	-0.1%
Value QR (mn)	432	319	35.4%
Trades	23,044	21,184	8.8%
Volume (mn)	148	114	29.8%
Stocks Traded	54	53	1.9%
Gainers	20	19	5.3%
Losers	26	25	4.0%
Unchanged	8	9	-11.1%

Source: Qatar Stock Exchange

### Weekly Market Recommendations:

Time Frame	Trend	Current Level	Target	Support	Resistance
Short-term (28Jun -02Jul)	↓	10,241.75	10,110	10,100	10,500
Medium-term (01Jul- 31Jul)	→	10,241.75	10,000	10,000	10,850

### Weekly Company Recommendations:

Company Name	Current Price	View	Time Frame	Support	Resistance
MCCS	QR5.547	Positive	Short-term (28Jun -02Jul)	QR5.391	QR5.762
QGRI	QR1.799	Positive	Medium-term (01Jul- 31Jul)	QR1.460	QR2.227

### Daily Company Recommendations:

Company Name	Current Price	View	Time Frame	Support	Resistance
DHBK	QR3.099	Positive	1 Day	QR3.071	QR3.122
BLDN	QR1.303	Positive	1 Day	QR1.292	QR1.316
QFBQ	QR2.970	Positive	1 Day	QR2.946	QR2.998
QGMD	QR1.391	Positive	1 Day	QR1.379	QR1.405

### List of Stocks Close to Technical Levels

Companies Closest to Resistance				
Company	Ticker	Mcap (QRmn)	Price	Resistance
Doha Bank	DHBK	9,608.3	3.099	3.102
Baladna	BLDN	2,793.6	1.303	1.308
Qatar Gas Transport Company Ltd.	QGTS	23,795.4	4.295	4.303
Barwa Real Estate Company	BRES	9,183.3	2.360	2.372
Ezdan Holding Group	ERES	22,599.3	0.852	0.865

Companies Closest to Support				
Company	Ticker	Mcap (QRmn)	Price	Support
Estithmar Holding	IGRD	19,860.5	4.420	4.414
AlRayan Bank	MARK	19,102.2	2.054	2.049
The Commercial Bank	CBQK	16,387.3	4.049	4.045
Ezdan Holding Group	ERES	22,599.3	0.852	0.844
Mesaieed Petrochemical Holding	MPHC	14,573.3	1.160	1.155

Companies with RSI over 70 (Overbought)				
Company	Ticker	Mcap (QRmn)	Price	RSI
Lesha Bank	QFBQ	3,326.4	2.970	80.41
Estithmar Holding	IGRD	19,860.5	4.420	71.78
Doha Bank	DHBK	9,608.3	3.099	65.71
Qatar General Insurance & Reinsurance Co	QGRI	1,574.2	1.799	64.95
Dlala Brokerage & Investments Holding Co	DBIS	281.6	1.479	64.26

Companies with RSI below 30 (Oversold)				
Company	Ticker	Mcap (QRmn)	Price	RSI
Qatar Industrial Manufacturing Co	QIMD	973.2	2.048	23.16
Zad Holding Co	ZHCD	3,880.1	13.50	25.11
Qatar Insurance Co	QATI	6,623.7	2.028	33.28
Industries Qatar	IQCD	66,550.0	11.00	33.98
Dukhan Bank	DUBK	17,476.7	3.339	37.54

Source: Refinitiv, QNBFS Research

**QE Index- Technical Charts**

**Daily**



Source: Bloomberg, QNBFS Research

The QE Index continued to drift lower yesterday, on the back of profit-booking. The Index after testing its intraday high near 10,295, failed to cling onto it and slid lower. The Index has been in a correction mode over the past few days. Meanwhile, if the Index manages to crawl above 10,280, it could attempt a rebound towards 10,350. On the flip side, any failure to move above 10,280, can drag the Index lower and test 10,200, followed by the 10,110 level.

**Weekly**



Source: Bloomberg, QNBFS Research

The QE Index failed to make any further headway above 10,550 last week and slid lower on the back of profit-booking. Meanwhile, the Index has been struggling to cross its 100-WMA currently near 10,655 and 200-WMA currently near 10,635 over the past few weeks. The Index needs to sustain above it for the trend to change. Overall current trend remains on the downside, and the Index can possibly test 10,250, followed by 10,100, before witnessing a possible reversal.

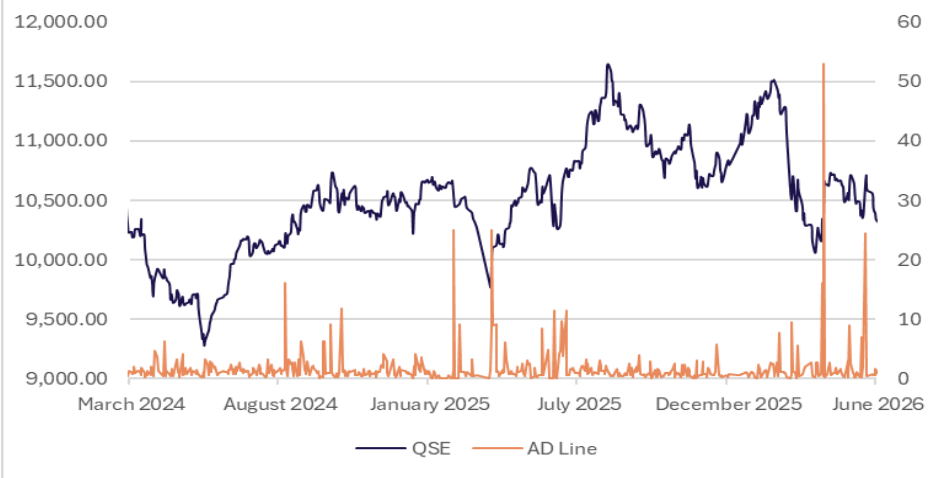
**Monthly**



Source: Bloomberg, QNBFS Research

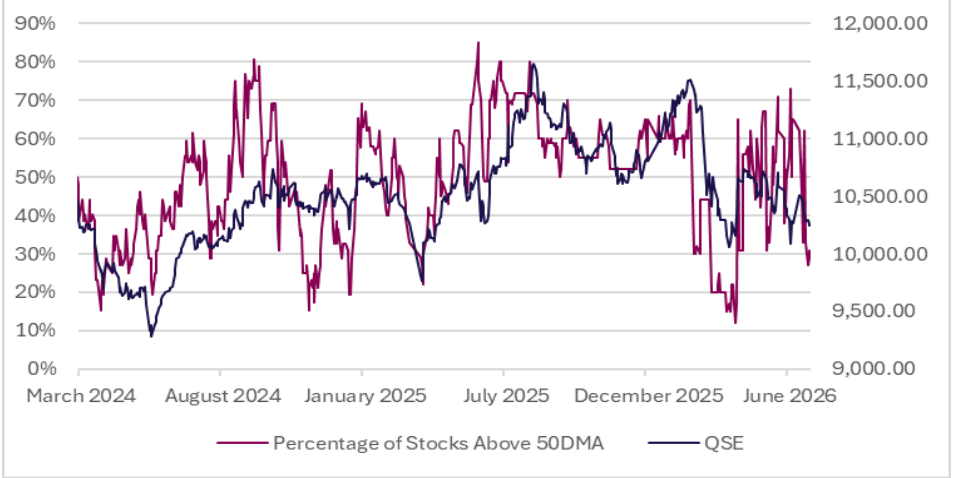
The QE Index moved lower on the back of profit-booking, after attempting a rebound in the past two months. Moreover, the Index breached below its important support of its 100-MWA currently near 10,570, indicating caution. However, the Index managed to stay above its 200-MWA currently near 10,090 and the lower end of the channel trendline, keeping its bounce back hopes alive. Meanwhile, acceptance above its 100-MWA, is required to test 10,760. On the downside, breach below its 200-MWA, can pull it down to test 9,800.

**Advance/Decline Line**



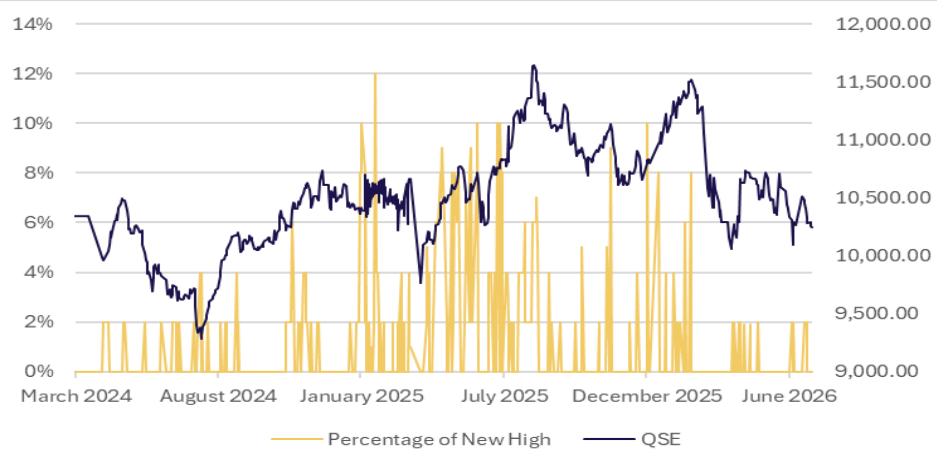
Source: Refinitiv, QNBFS Research

**Percentage of Stocks Above 50-day Moving Average**



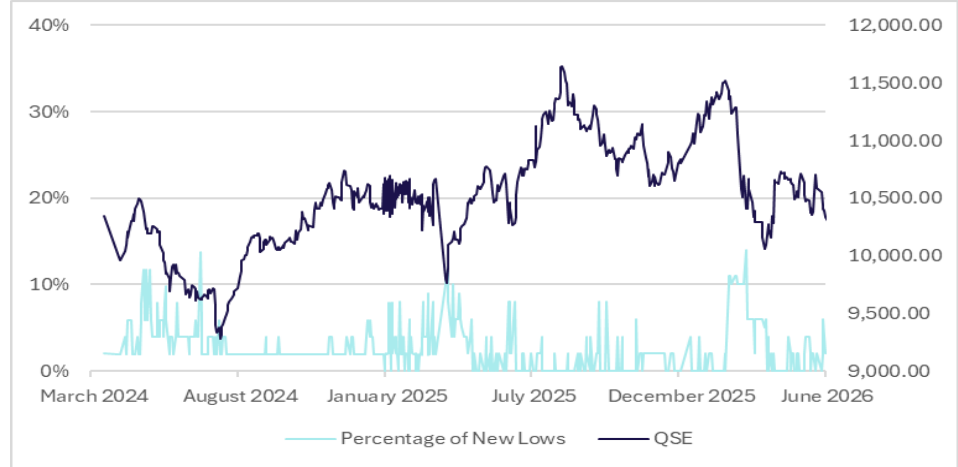
Source: Refinitiv, QNBFS Research

**Percentage of New Highs to Total Market**



Source: Refinitiv, QNBFS Research

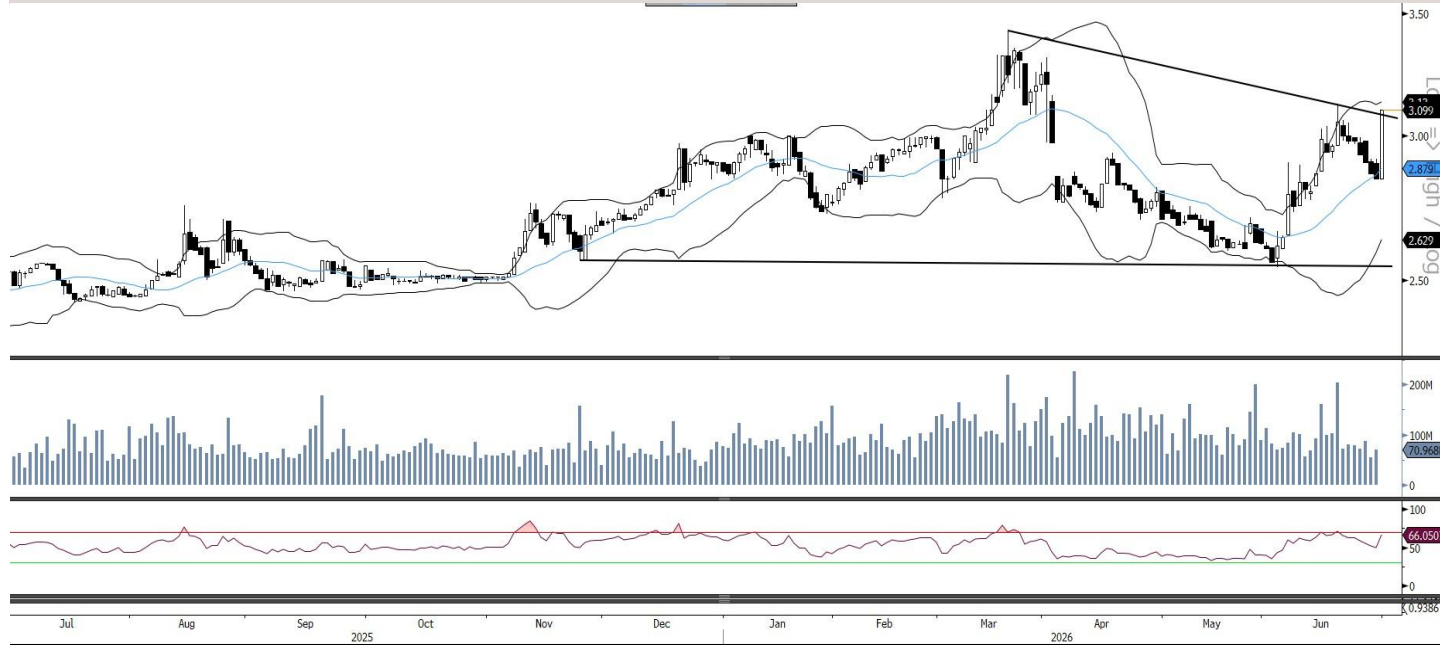
**Percentage of New Lows to Total Market**



Source: Refinitiv, QNBFS Research

### Daily Company Recommendations

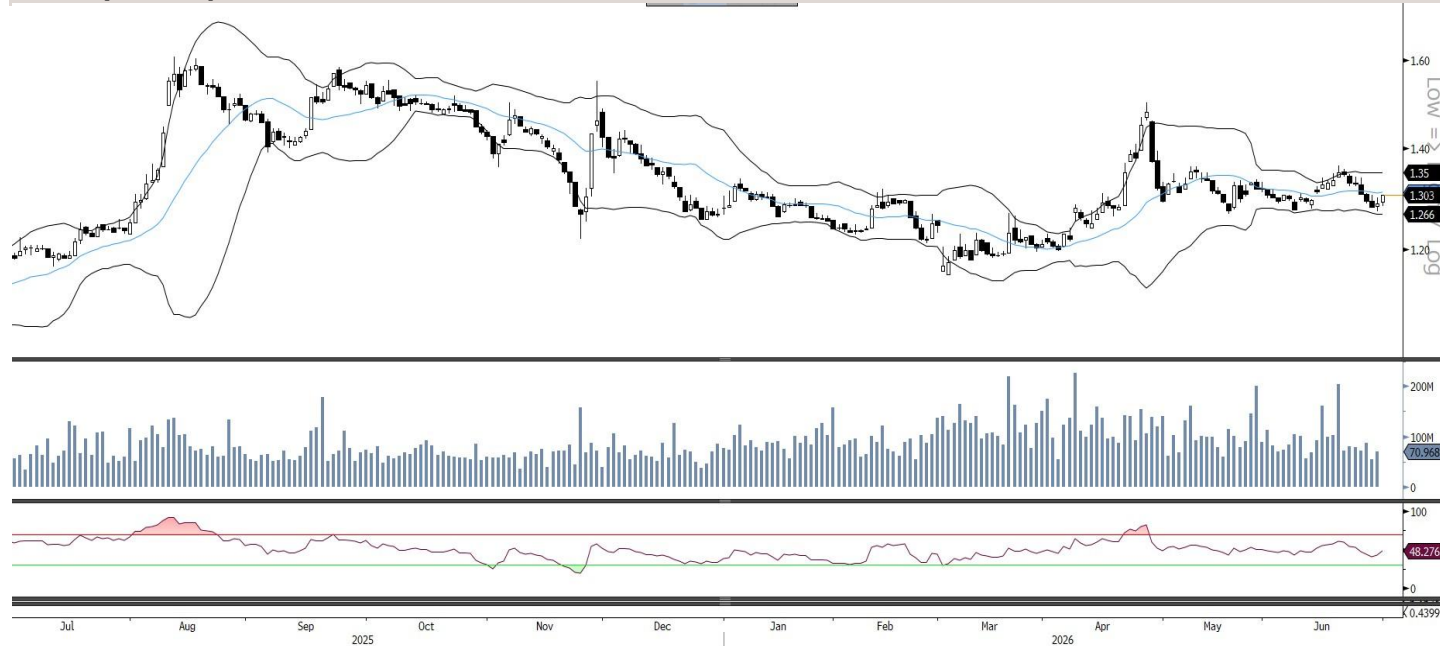
#### DHBK (Doha Bank)



DHBK witnessed a strong bounce back after correcting over the past few days and breached the descending line with a bullish marubozu candle, indicating the rebound to continue. The RSI line is in the buy zone. Traders can initiate buy positions above QR3.105, for a target of QR3.122, with a stop loss at QR3.071.

Source: Bloomberg, QNBFS Research

#### BLDN (Baladna)

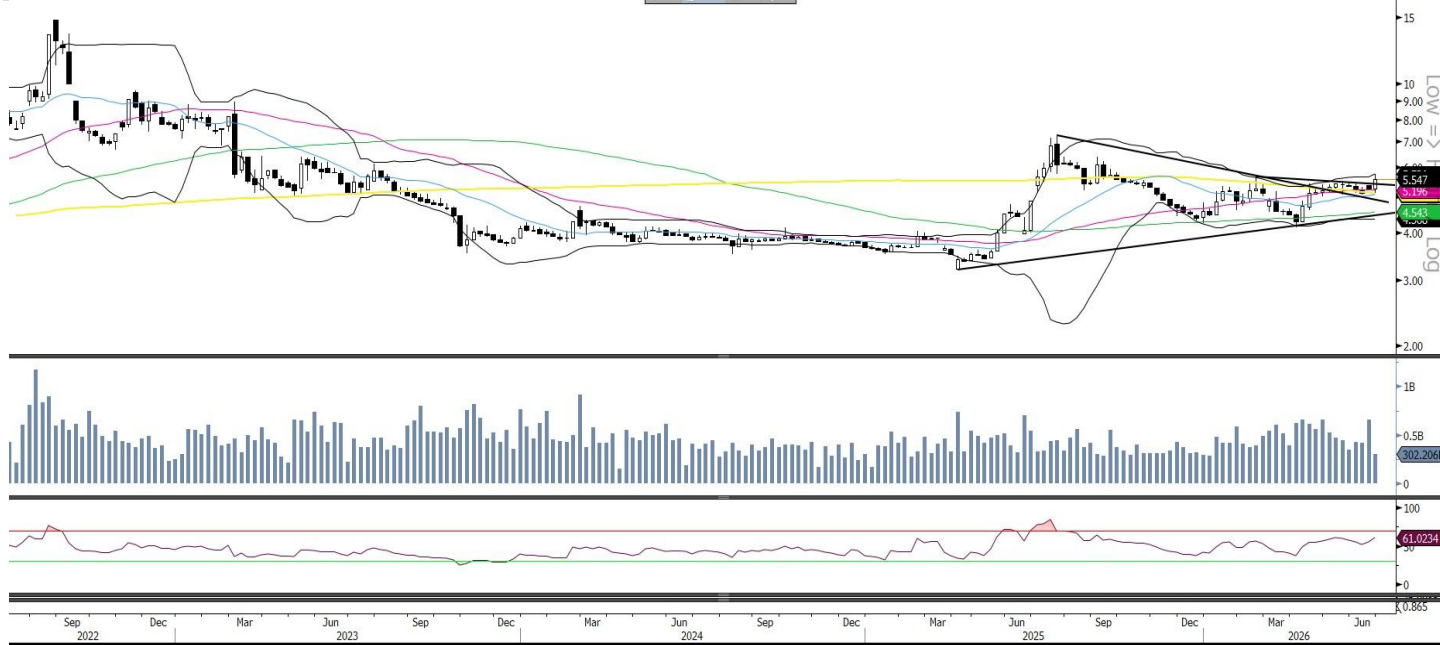


BLDN has been showing a rebound over the past few days and is approaching towards its mid-bollinger band. The RSI line is moving up towards the 50 zone. Traders can initiate buy above QR1.308, for a target of QR1.316, with a stop loss QR1.292.

Source: Bloomberg, QNBFS Research

**Weekly Company Recommendations**

**MCCS (Mannai Corp.)**



On the weekly charts, MCCS after moving above the symmetrical triangle few weeks earlier and consolidating for few weeks has now finally managed to close above its previous swing high, showing signs of a possible rally ahead. The stock is also trading above all the moving averages, indicating strength. The weekly RSI is in the bullish zone. Traders can initiate buy only above QR5.609, for a target of QR5.762, with a stop loss at QR5.391.

Source: Bloomberg, QNBFS Research

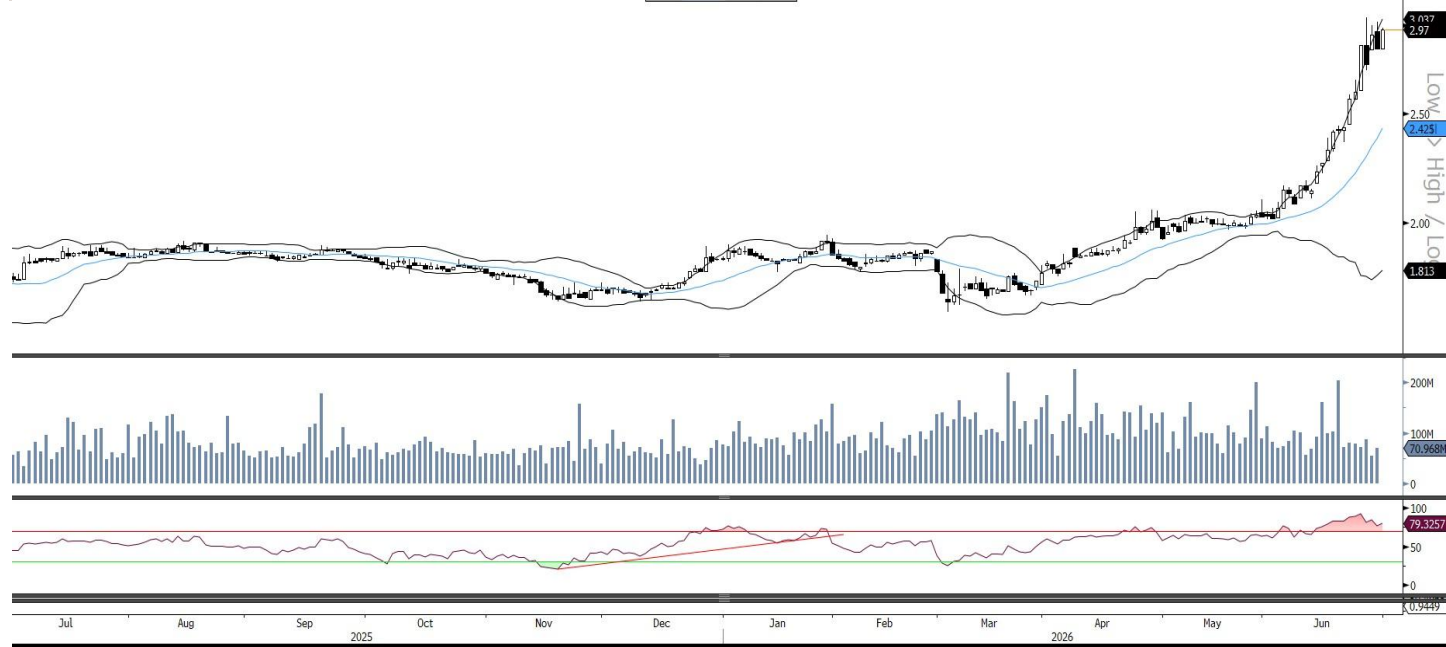
**QGR (General Insurance)**



On the monthly charts, QGR has been moving in the rising channel trendline zone over the past few months and is on the verge of a breakout. The stock has been consolidating in a range and now seems ready for a possible higher move. The RSI line supports this bullish sentiment. Investors can consider buying the stock only above QR1.880 for a breakout confirmation, with a stop loss of QR1.460, for a potential target of QR2.227.

Source: Bloomberg, QNBFS Research

**QFBQ (Lesha Bank) - Short Term**



QFBQ has been witnessing strong upside over the past few days and is likely to continue its upside momentum. The RSI line is showing strength. Traders can initiate buy only above QR2,985, for a target of QR2.998, with a stop loss at QR2.946.

Source: Bloomberg, QNBFS Research

**QGMD (Qatar German Co. Med)- Medium Term**



QGMD after correcting over the past few days developed a reversal candle yesterday, indicating signs of a likely bounce back. Traders can initiate buy positions above QR1.396, for a target of QR1.405, with a stop loss at QR1.379.

Source: Bloomberg, QNBFS Research

## Contacts

### **QNB Financial Services Co. W.L.L.**

Contact Center: (+974)4476 6666

[info@qnbfs.com.qa](mailto:info@qnbfs.com.qa)

Doha, Qatar

### **Shahan Keushgerian**

Senior Research Analyst

[shahan.keushgerian@qnbfs.com.qa](mailto:shahan.keushgerian@qnbfs.com.qa)

### **Saugata Sarkar, CFA, CAIA**

Head of Research

[saugata.sarkar@qnbfs.com.qa](mailto:saugata.sarkar@qnbfs.com.qa)

### **Phibion Makuwerere, CFA**

Senior Research Analyst

[phibion.makuwerere@qnbfs.com.qa](mailto:phibion.makuwerere@qnbfs.com.qa)

### **Dana Saif Al Sowaidi**

Research Analyst

[dana.alsowaidi@qnbfs.com.qa](mailto:dana.alsowaidi@qnbfs.com.qa)

Disclaimer and Copyright Notice: This publication has been prepared by QNB Financial Services Co. W.L.L. ("QNBFS") a wholly-owned subsidiary of Qatar National Bank (Q.P.S.C.). QNBFS is regulated by the Qatar Financial Markets Authority and the Qatar Exchange. Qatar National Bank (Q.P.S.C.) is regulated by the Qatar Central Bank. This publication expresses the views and opinions of QNBFS at a given time only. It is not an offer, promotion or recommendation to buy or sell securities or other investments, nor is it intended to constitute legal, tax, accounting, or financial advice. QNBFS accepts no liability whatsoever for any direct or indirect losses arising from use of this report. Any investment decision should depend on the individual circumstances of the investor and be based on specifically engaged investment advice. We therefore strongly advise potential investors to seek independent professional advice before making any investment decision. Although the information in this report has been obtained from sources that QNBFS believes to be reliable, we have not independently verified such information and it may not be accurate or complete. QNBFS does not make any representations or warranties as to the accuracy and completeness of the information it may contain, and declines any liability in that respect. For reports dealing with Technical Analysis, expressed opinions and/or recommendations may be different or contrary to the opinions/recommendations of QNBFS Fundamental Research as a result of depending solely on the historical technical data (price and volume). QNBFS reserves the right to amend the views and opinions expressed in this publication at any time. It may also express viewpoints or make investment decisions that differ significantly from, or even contradict, the views and opinions included in this report. This report may not be reproduced in whole or in part without permission from QNBFS.